



Warroad Senior Living Center

Exceptional Care, Meaningful Life

Welcome

The Warroad Senior Living Center is a place where imagining what is possible is a daily occurrence and where every resident can live their life to the fullest. Our personal approach to senior housing and care allows customized services to best meet the lifestyles of our residents. We recognize our residents are unique and require individualized support. Our goal is to

provide quality care and services to enrich the lives of each resident, while encouraging personal independence.

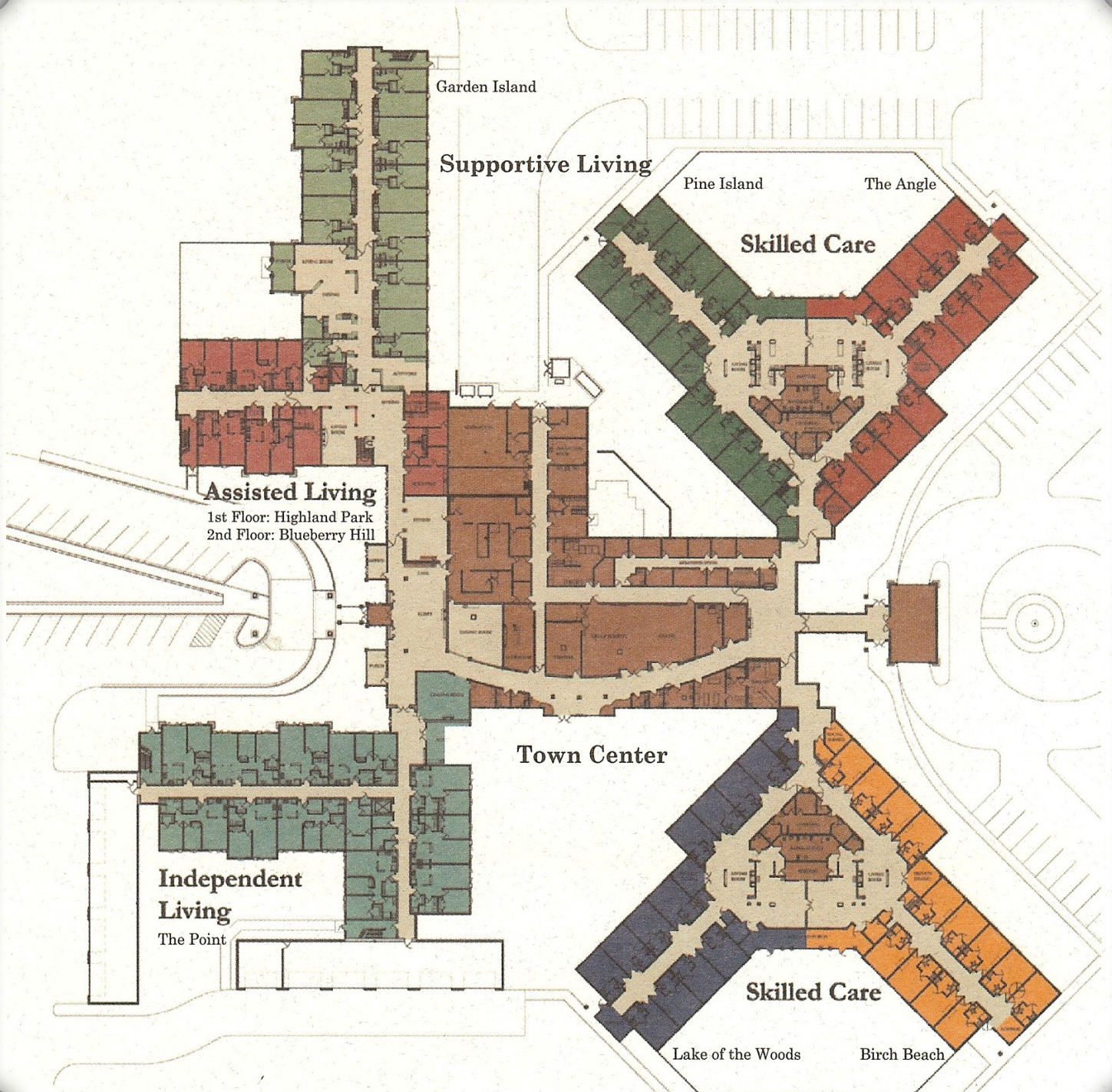
That is what is meant by our commitment to provide exceptional care and the opportunity for a meaningful life for each resident.



Campus

Our campus offers a full continuum of care.

A nature-inspired setting of the campus includes beautiful porches, gardens and courtyard.



Exceptional Care Dining

Although we pride ourselves on our state of the art facility, it's the special attention to our residents' needs that offers the opportunity to lead to an exceptional quality of life.

Residents benefit from our continuum of care services consistent with their needs:

- *Professional Nursing Staff On-site 24-hours a Day For Emergencies*
- *RN Staff On-call 24-hours a Day and Monthly On-site Physician Monitoring*
- *Direct Resident Care*
- *Licensed Social Worker Consultant*
- *Medication Management and Pharmacy Consultant*
- *IV Therapy*
- *Nutritional Management and Dietary Consultant*
- *Physical, Occupational and Speech Therapy*
- *Restorative Nursing Program*
- *Hospice Services*
- *RSVP, Adult and Junior Volunteer Program*
- *Barber and Beautician Services*
- *Scheduled Transportation*
- *Spiritual Care Coordinator/Programs*
- *Resident Security Systems*
- *On-site Services Manager with 24-hour Maintenance Service*
- *Specialized Training in Memory and Alzheimer's Care*

DINING AREAS:

Mealtimes begin in our centrally located kitchen where healthy, delicious cuisine is prepared three times each day. Meals, which include regional favorites, are catered to special dining rooms throughout the campus. Our residents enjoy a social dining experience, with their closest friends, just steps away from their own room or apartment.

Formal Dining



Skilled Nursing Dining



Skilled Nursing Dining



Activities

Our vision is to help our residents hold on to, rediscover and live out their purpose. We offer numerous ways for residents to stretch their personal boundaries of physical, mental and spiritual well-being. We encourage residents to live with as much abundance, activity and independence as they are able to embrace.

TOWN CENTER:

The Town Center is the hub of our campus and offers our residents the familiar experience of going to town. Residents and visitors can walk the boulevard that leads to several amenities found within any community:

- *Large Group/Family Gathering Area - available for daily activities and special events*
- *Chapel - weekly church services held here, the chapel remains open at all times for private prayer*
- *Beauty Shop - open weekly for scheduled appointments*
- *Fitness and Wellness Center - gym open to residents for independent exercise opportunities*
- *Physical Therapy Center - area for private therapy sessions scheduled with trained therapist*
- *Club Room - includes billiard table and other games for a social experience*
- *Business Center - computers with internet access available to residents and their families*
- *Café - comfortable sitting area with coffee, ice cream and treats available*
- *Sundries - variety of miscellaneous essentials available for purchase*

CALENDAR OF EVENTS:

The Warroad Senior Living Center calendar of events is designed to combine aspects of each of the following areas:

- *Spiritual - weekly bible study and church services*
 - *Creative - monthly craft and project sessions*
 - *Social and Recreational - monthly outings in the community and special guests are invited in*
 - *Emotional - weekly support group sessions*
 - *Physical - weekly fitness opportunities*
 - *Intellectual - weekly trivia, word games and educational programs*
 - *Sensory - weekly games that encourage physical activity and intellectual thinking*
- (An activity calendar can be requested for your review.)*

Skilled Care

Our skilled care facility is made up of four households named **Pine Island**, **The Angle**, **Lake of the Woods** and **Birch Beach**. Pine Island is devoted to residents with impaired memory.

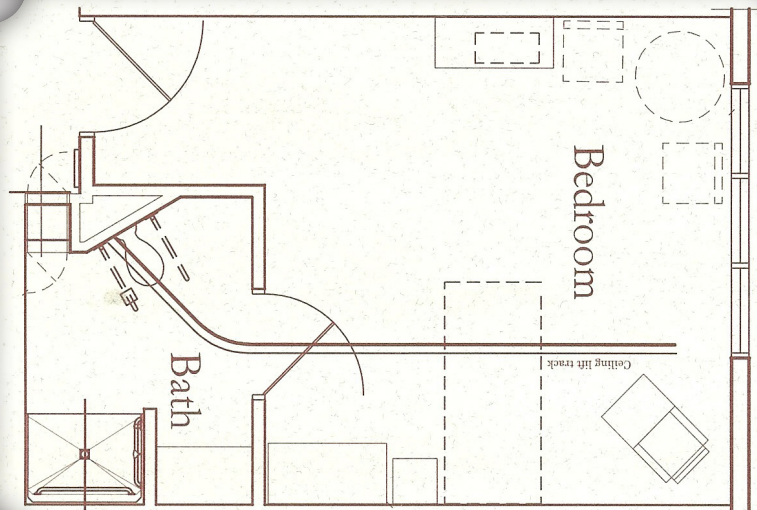
A group of twelve skilled care rooms makes up a single household. Each household includes a community living room, dining room, kitchen and private dining room. The households feature a functional and interactive design allowing the same employees to have daily contact with their

residents. Addressing, not only their medical needs, but also their social needs and interests.

All 49 private rooms average 400 square feet, significantly larger than most care facilities. These spacious rooms allow residents the opportunity to individualize their space with a few personal items and furnishings from home.

Each room features advanced technologies including ceiling mounted lifts.

Image of Floor Plan Example



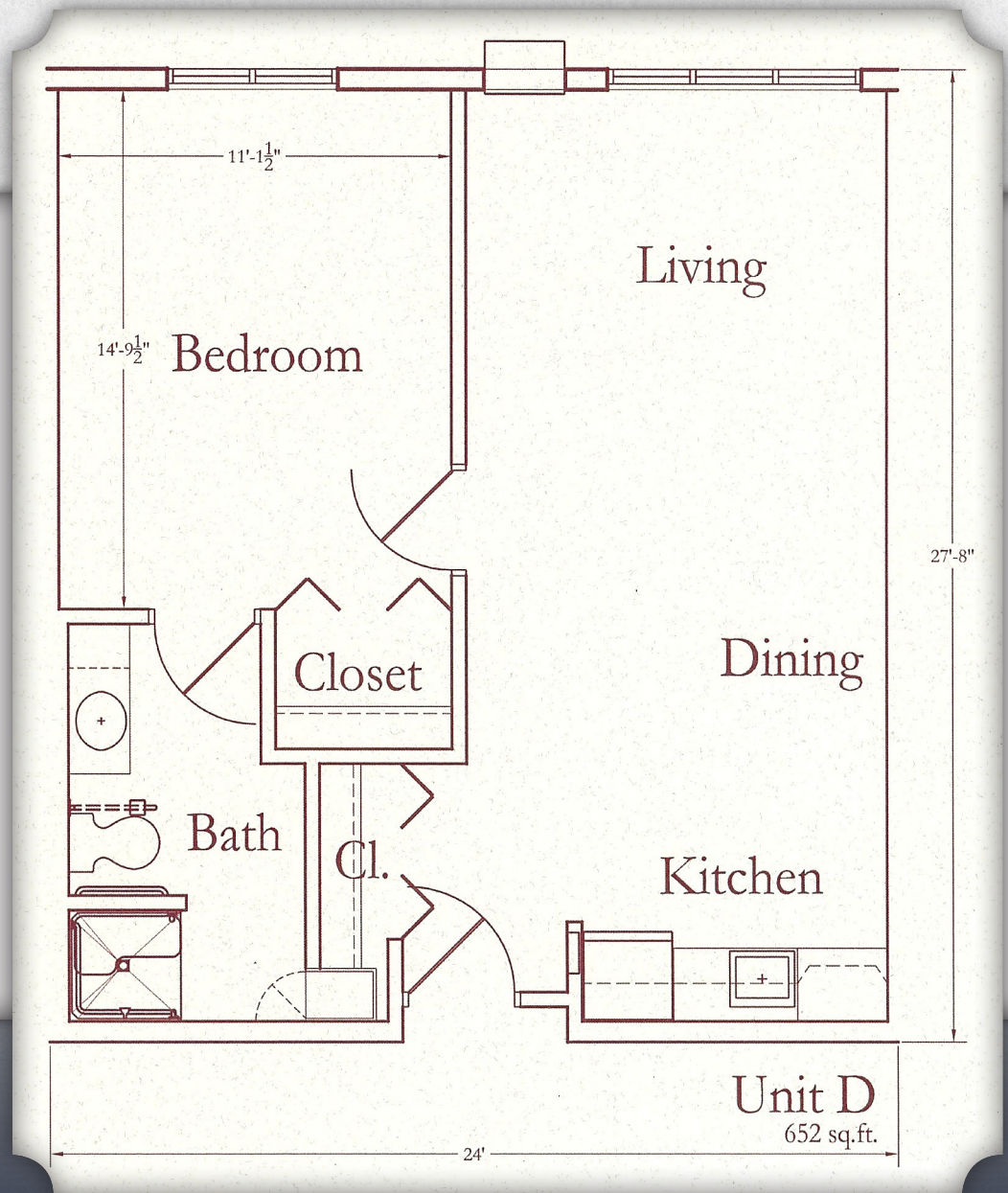
Supportive Living

GARDEN ISLAND accommodates a total of ten residents that are physically well but showing signs of needing additional support and security. All apartments are one bedroom with ample space totaling 652 square feet. Each apartment contains a private bedroom, bathroom, living/dining room and a security-enhanced kitchen. The Supportive Living apartments are located on the first floor of the Assisted Living Wing, which opens up to a beautiful screened-in porch and secure outdoor courtyard.

ONE BEDROOM:

Monthly fee includes: Three meals/day, urgent response, all laundry, house-keeping, activities, 24-hour supervision, medication management, supervised grooming, bathing and dressing.

One Bedroom Plan Example



Assisted Living

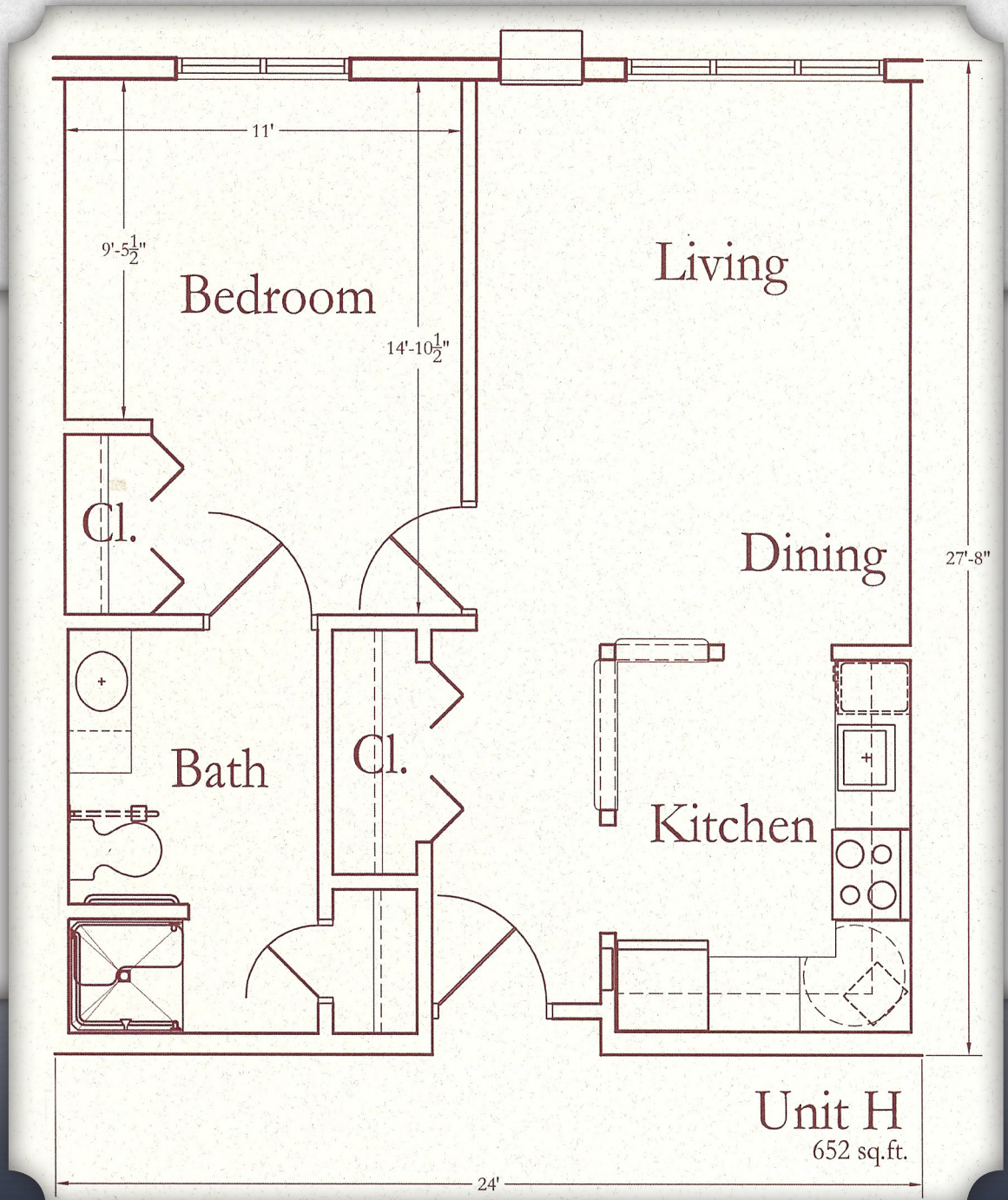
HIGHLAND PARK and **BLUEBERRY HILL** offer 22 apartments on two floors.

One and two-bedroom apartments are available ranging from 652 to 897 square feet. Each apartment contains private bedroom(s), large closets, bathroom, living room, dining room and kitchen (including stove, refrigerator, and dishwasher). Assisted Living residents have full access to the Town Center and have a separate entrance with an apartment-style security system. This wing provides a social opportunity for its residents, with a community dining room, activity area, laundry room, spa and two-story living room.

ONE BEDROOM:

Services included in monthly fee: One meal per day, urgent response, select laundry, housekeeping and activities.

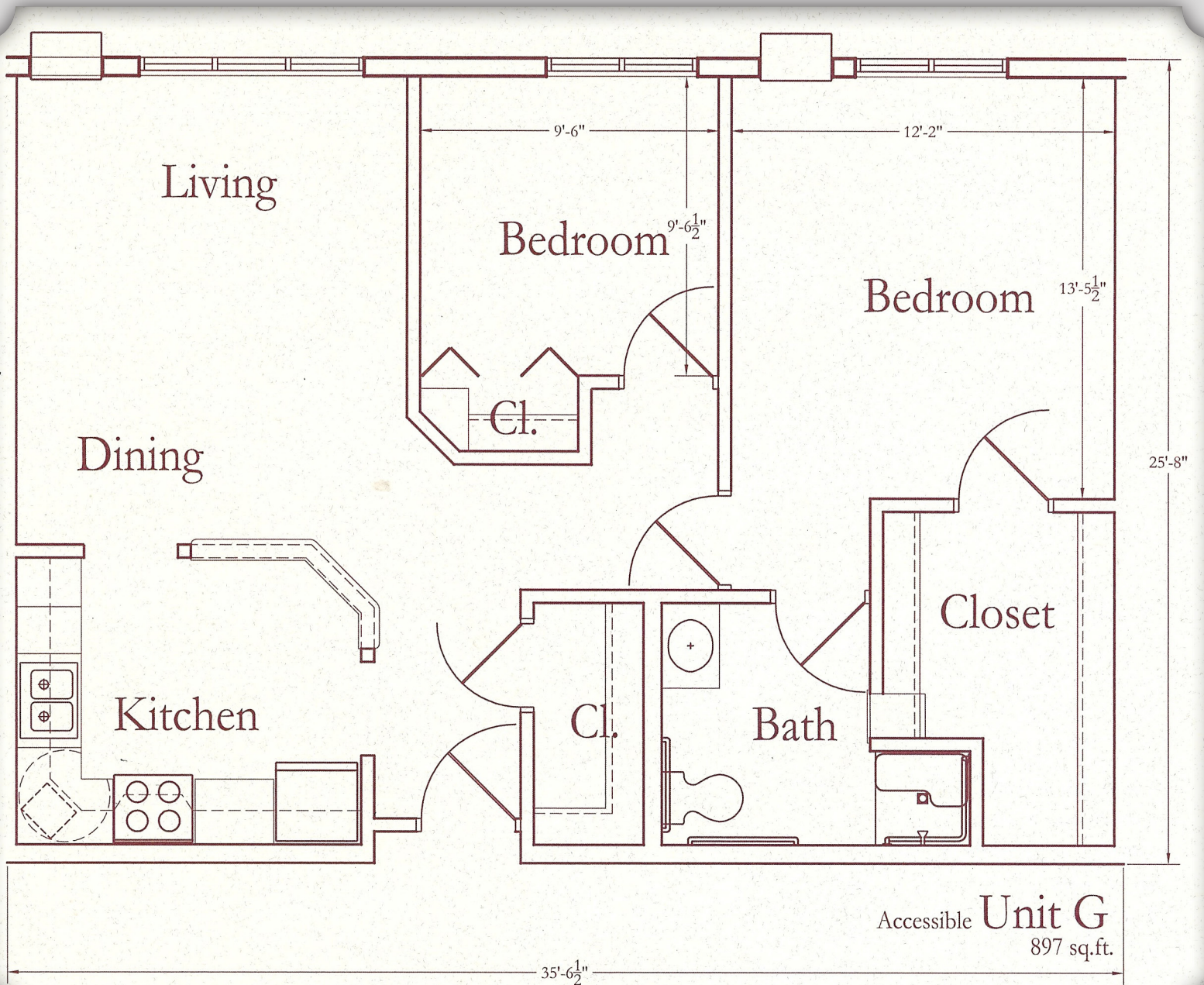
One Bedroom Plan Example (See next page for 2 bedroom plan.)



TWO BEDROOM:

Services included in monthly fee: One meal per day, urgent response, select laundry, housekeeping and activities.

Assisted Living Two Bedroom Plan Example



Accessible **Unit G**
897 sq.ft.

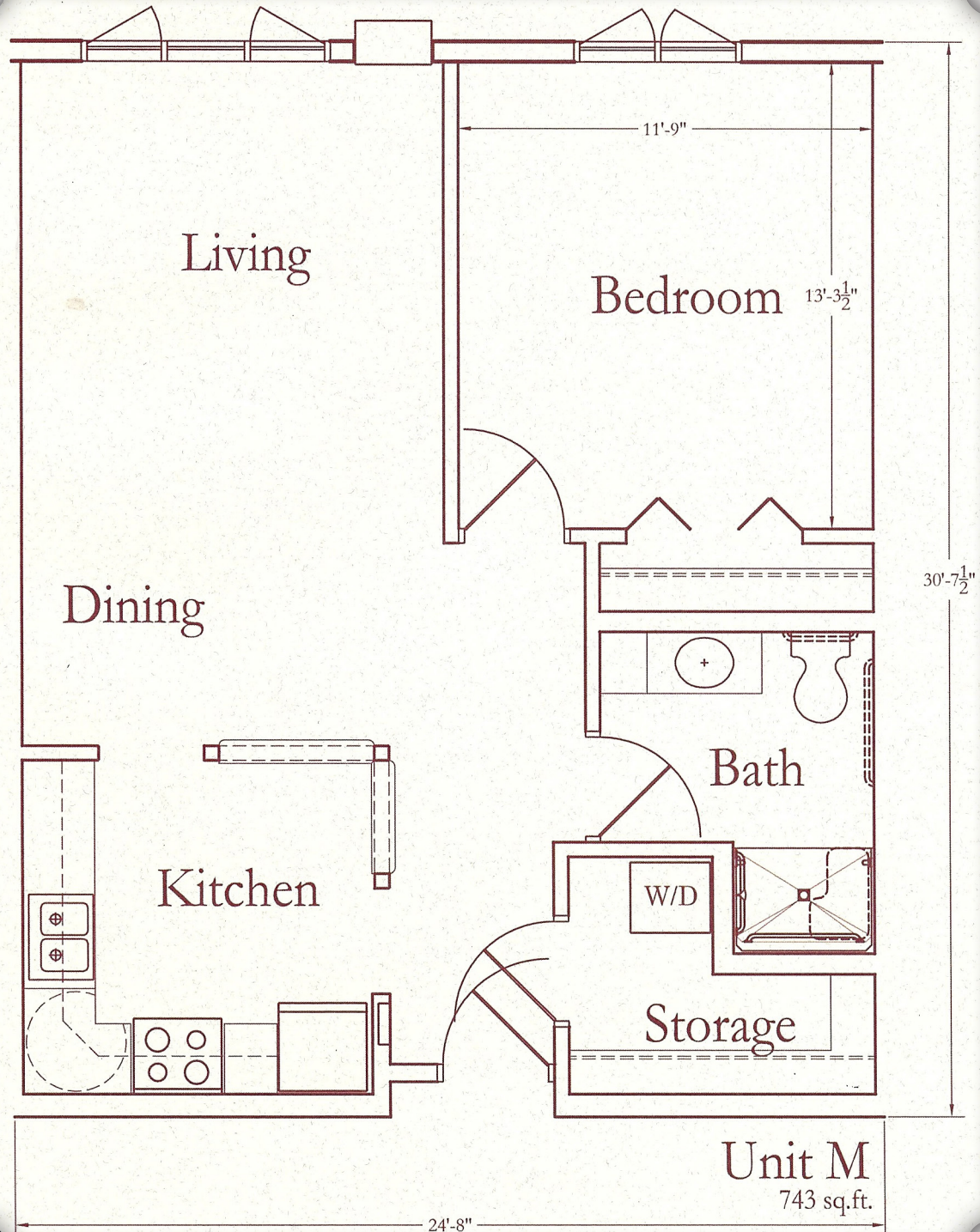
Independent Living

THE POINT provides apartment living for those who can live independently but desire a reduction in household tasks. The campus offers 22, one and two bedroom apartments in this spectacular two-story setting. Each apartment includes a full kitchen (including stove, refrigerator, microwave, dishwasher and garbage disposal), living and dining area, washer and dryer. Upkeep of these modern, spacious apartments is completely taken care of including lawn and landscape care, snow removal and maintenance. Additional services are available including up to 3 meals per day, housekeeping, medical checks and medication management for an additional fee.

ONE BEDROOM:

Services included in monthly fee: One meal per day, urgent response, activities and utilization of Town Center amenities.

*One Bedroom Plan
Example (See next page
for 2 bedroom plan.)*



Unit M
743 sq.ft.

TWO BEDROOM:

Services included in monthly fee: One meal per day, urgent response, activities and utilization of Town Center amenities.

Independent Living Two Bedroom Plan Example

